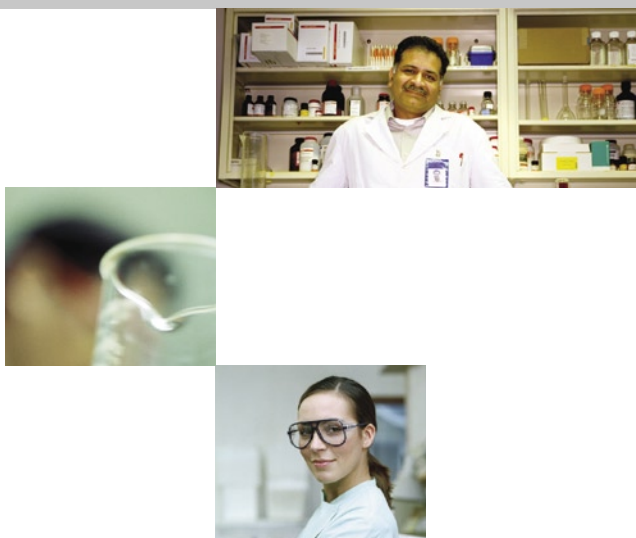


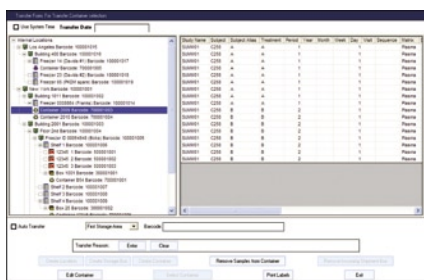
Watson is a highly specialized protocol-driven Laboratory Information Management System (LIMS) specifically designed to support drug metabolism and pharmacokinetic (DMPK) studies in drug discovery and development.

## WATSON LIMS™

The acknowledged standard in LIMS for bioanalytical laboratories



Watson's integrated sample handling and tracking system allows users to log in shipments and samples easily and quickly.



### Challenge

DMPK analysis is an integral part of drug discovery and development. Efficient screening and characterization of potential targets, as well as the subsequent selection of optimal candidates for development, are key steps in progressing a compound to clinical trials or halting its advance before too much time or money is wasted.

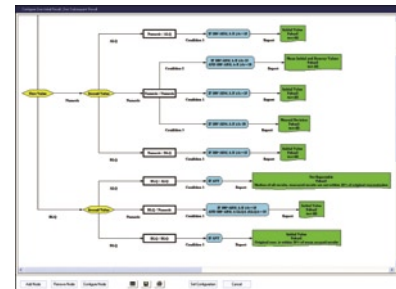
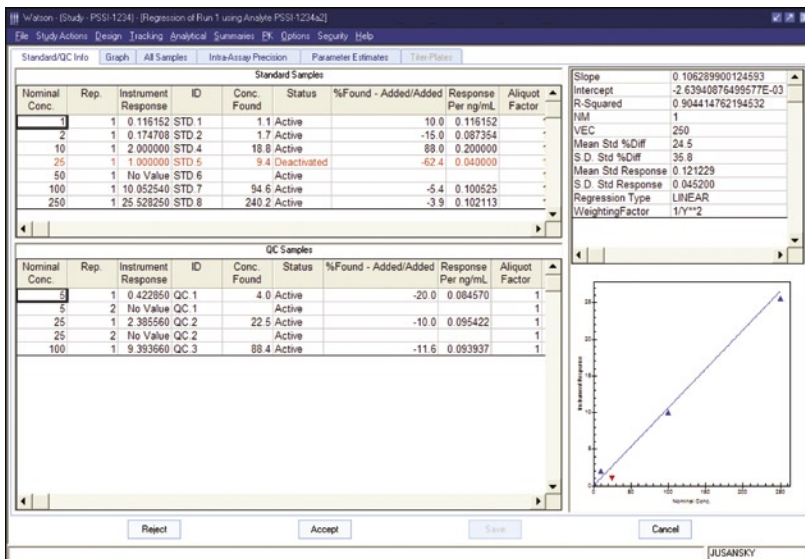
Facing constant pressures to decrease costs while optimizing efficiency, pharmaceutical companies and contract research organizations (CROs) alike require a LIMS solution that meets the specific needs of their DMPK laboratories. Generic LIMS require costly customizations to meet the workflow, functionality and regulatory requirements of these labs, and involve complex validation and upgrades.

### Thermo's Solution

Watson LIMS is a proven commercial-off-the-shelf (COTS) solution specifically designed for bioanalytical testing. With minimal configuration required, implementation, validation and upgrades are much faster than with a generic LIMS, and companies can benefit from immediate efficiency gains.

Watson includes key functionality specific to the DMPK laboratory, including flexible protocol-based study design, assay/method standardization and management, integrated sample management, and a configurable reassay decision tree. Watson includes more than 65 built-in interfaces to LC/MS, HPLC, plate readers, counters and ICP-MS instruments. It also supports a wide range of pharmacokinetics/toxicokinetics calculations. In addition, Watson's simple, point and click

**WATSON LIMS**



Watson creates calibration curves (left) from standards and back-calculates concentrations for QCs and unknowns, while the reassay decision tree (above) automatically selects the appropriate result from among several results as predetermined by the user.

graphical interface ensures users can get up to speed quickly and begin using the LIMS with minimal training.

**Improve Laboratory Efficiency**

Designed to fit the bioanalytical workflow, Watson enables accelerated sample turnaround in DMPK laboratories, thereby reducing costs associated with sample management. Watson tracks shipments and sample storage and allows users to design barcoded labels. In addition, Watson includes more than 150 pre-configured reports as well as ad hoc reporting capabilities, facilitating data review and analysis. The system organizes study results in a unique document management system, allowing fast and efficient retrieval of data and creation of consistent, final reports.

Importantly, 18 of the top 20 pharmaceutical companies and many of the world's leading CROs and biotech companies have selected Watson for their labs. As the acknowledged standard for bioanalytical LIMS, Watson facilitates efficient study design and data transfer between researchers, enabling them to benefit from improved operational efficiency.

**Standardize Assays**

Watson has an add-on module for determining immune response by titer ELISA and radioimmunoprecipitation bioanalysis and features three types of assay: screening, spike-out and titer. This module offers a standardized way to design, calculate and report anti-drug antibody assays within a GLP- and 21 CFR Part 11-compliant system.

**Ensure Compliance**

Developed with regulatory compliance in mind, Watson enables companies to comply with GLP and 21 CFR Part 11 regulations in a

cost effective manner. Security features ensure data integrity while access is controlled via roles and responsibilities. Audit trails track changes throughout, maintaining a record and making reporting to FDA easier.

**Partnering with Thermo**

Thermo is the worldwide leader in laboratory software and related services, providing enterprise-wide, multi-laboratory solutions that have become the corporate standard at leading organizations. Our LIMS and CDS facilitate mission-critical laboratory data in the world's leading pharmaceutical companies. To support our global customers, Thermo provides implementation, validation, training, maintenance and support from the industry's largest worldwide informatics services network.

Watson leads Thermo's comprehensive portfolio of software solutions for the pharmaceutical industry, including Galileo LIMS™ for in vitro ADME studies in early stage discovery and development; Nautilus LIMS™ for discovery and R&D, particularly in biotechnology; Atlas CDS™, an enterprise chromatography data system that tightly integrates with LIMS; Enterprise Pharmacology (EP) Series™ and Kinetic™ analytical database tools for pharmacokinetics and pharmacodynamics; and GRAMS spectroscopy analysis software.

**For More Information**

Visit us on the web at [www.thermo.com/informatics](http://www.thermo.com/informatics) or call +1 866-463-6522 (US) or (44) 161 942 3000 (Intl).