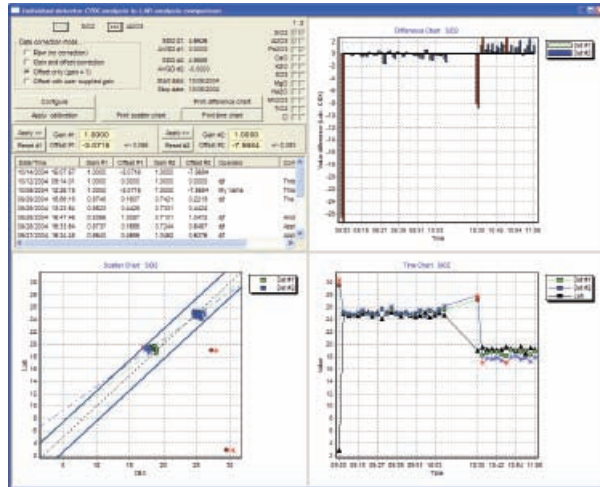




## CB Omni System Optional Software

### Data Analysis

Software automatically generates XY plots, time series plots and time series difference plots as well as regression and comparison statistics. The program also allows graphical exclusion of outliers if desired.



### Data Collection

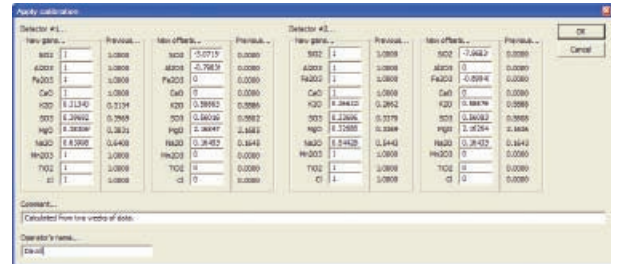
**Automatic:** If laboratory analysis information is available in file format on a plant network, it can be loaded into the PACT software automatically. An association mapping is made between the data in the file and the PACT software.

**Manual:** Reference data can also be input into the PACT software manually through an input screen.

In either case above the data is "time aligned" so that the time of the sample collection corresponds to the time the material was measured by the cross-belt analyzer system. Data can also be filtered statistically or graphically for "outliers" if desired.

### Calibration

Once the data has been analyzed, the system provides suggested parameters to automatically implement and store when ready.



### PACT—Linking Your Process to Your Laboratory



### Minimum Hardware Specifications

Make	Dell®
Model	OptiPlex GX150
Processor	Intel® Pentium® III
Speed	933 MHz
Memory	256 Kilobytes
Hard Drive	40 Gigabytes

### Minimum Software Specifications

Operating System	Windows® 2000, SP4
Nautilus version	MVIA analysis techniques used in Build 1100

© 2007 Thermo Fisher Scientific Inc. All rights reserved. Dell is a trademark of Dell. Intel and Pentium are trademarks of Intel Corporation in the U.S. and other countries. Windows is a registered trademark of Microsoft Corporation in the United States and other countries. Results may vary under different operating conditions. Specifications, terms and pricing are subject to change. Not all products are available in all countries. Please consult your local sales representative for details. Literature Code PI.7015.1107

China	+86 (0) 21-6865 4588	India & Australasia	+91 (20) 6626 7000
	+86 (0) 21-6445 1101 fax		+91 (20) 6626 7001 fax

Americas	+1 (800) 488-4399	South Africa	+27 (0) 11-609-3101
	+1 (858) 452-9250 fax		+27 (0) 11-609-3110 fax

[www.thermo.com/cement](http://www.thermo.com/cement)

**Thermo**  
SCIENTIFIC