

TRACE MS PLUS Software Help

Re-installation of TRACE MS PLUS Software

This is the recommended process if you are upgrading or reinstalling the trace Plus software. A procedure for Thresholding is also included.

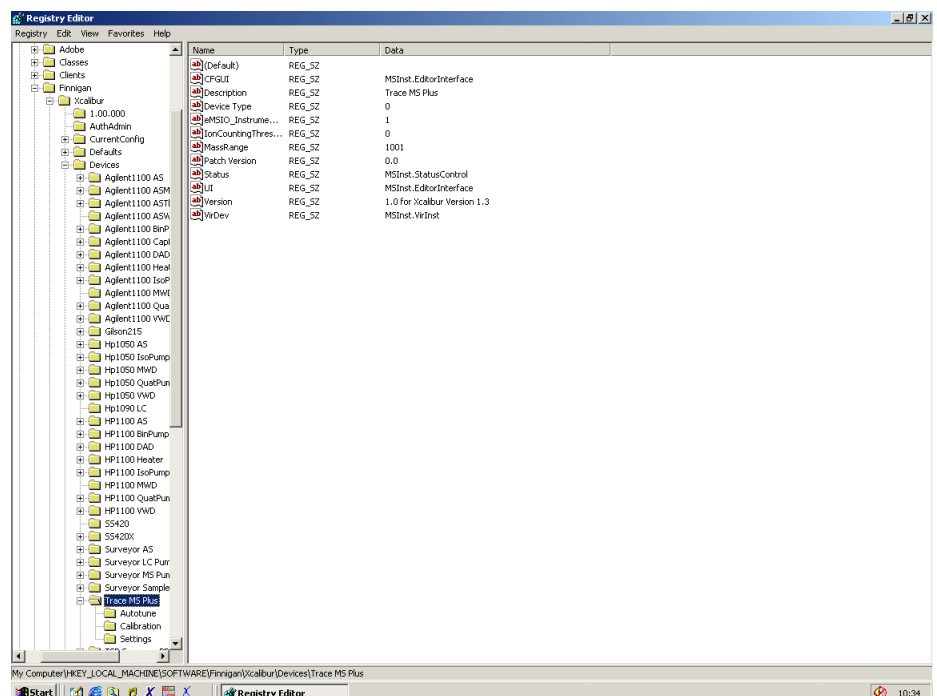
Remove the Registry Key

Close down the tune page (ensure that the icon is not present in the system tray) – you will also need to also close down Xcalibur

From command line run “**regedit**”

Browse to

**HKEY_LOCAL_MACHINE\SOFTWARE\Finnigan\Xcalibur\Devices
\Trace MS Plus**



Delete the entire Trace MS Plus key (this includes the three subkeys Settings, Autotune and Calibration).

Remove the Default Tune file

Run Windows Explorer.

Browse to **C:\Xcalibur\methods**

Delete **default.tune** file

Remove Trace MS Plus software

From the Control Panel click **Add/Remove Programs**

Remove the Trace MS Plus program by clicking “**Change/remove**” at the appropriate entry in the list

Accept all the defaults during uninstallation

Reinstall Trace MS Plus software

Run **x.install.exe** from the installation CD and select Trace MS Plus button as normal

Reboot the Trace Plus using the recessed reset button on the rear of the instrument

Run Trace MS Plus from the shortcut – you should hear a beep as the board in the instrument resets

The tune page should display a spinning note symbol in the top left hand corner if communications are working.

Other things to be aware of:

- 1) If the tune page is manually closed down, pause for five seconds before restarting it – otherwise communications may not reset properly.
- 2) If the system crashes close down the tune page and reset the instrument before restarting the tune page.

- 3) In some cases the tune page will not close down at all – even though Xcalibur is not running. If this happens either:
 - a. Reboot the PC and reset the instrument before running the tune page again

Or

- b. Click Ctr|Alt|Del to start Task Manager.

Under the processes tab delete the following processes:

“ACQSER~*”

“msinst.exe”

The icon in the system tray will disappear if you mouse-over it.

Reset the instrument using the button at the rear.

Restart **Tune**.

Thresholding Procedure

Enable the Engineer’s Tune (see the Installation and Commissioning Guide) and also add the switch **-Super** to the command line.

- 1) Before Signal to Noise tests, set the initial Threshold values to:
Centroid=0; SIM=25; Profile=0
- 2) After Blank injection on Centroid, check for data drop-outs. If there is data drop-outs present, modify threshold until there is data at every point. Note that this value will be negative.
- 3) After SIM Signal to Noise injection, check data for noise near, but not below, the baseline. If there is some drop-outs, modify Threshold Value to ensure some data at all points. Note a value of 20 is usually sufficient.

Disable the Engineer’s Tune and remove the **-Super** switch from the Tune Icon