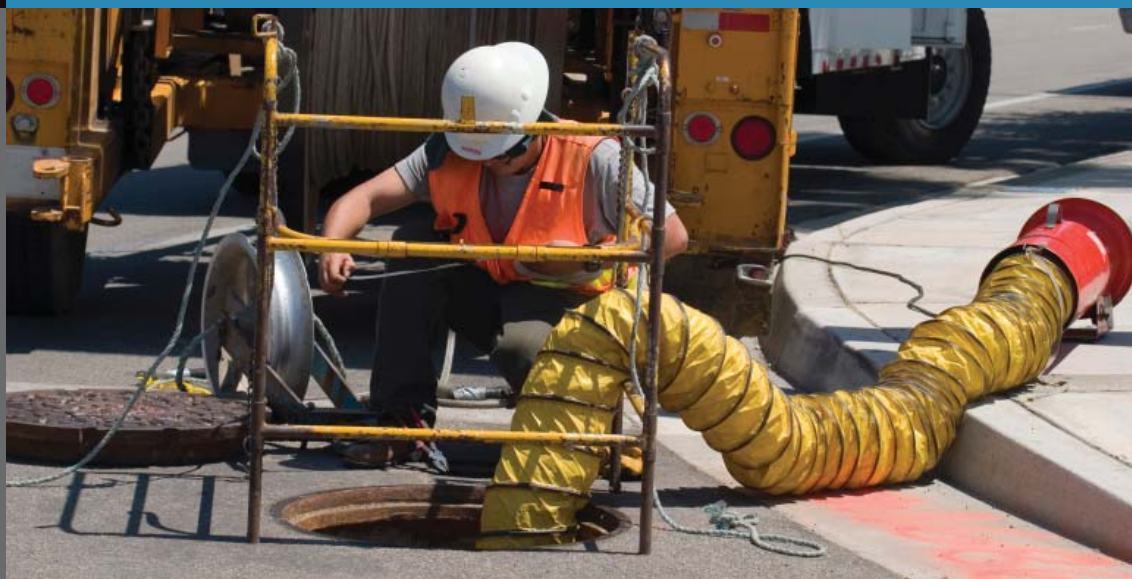


Four Gas Personal Monitor with Unmatched Reliability

Thermo Scientific Genesis
Portable gas monitor with
Duraplus™



Configurable for one to four gases.



The Genesis™ Portable Gas Monitor

The Thermo Scientific Genesis, a personal, portable gas monitor, combines ease of operation with outstanding durability to deliver reliable performance in the most demanding environments - even a direct hammer blow to the display. Weighing only 16 ounces, the Genesis is protected by a die-cast aluminum housing, rubber guards, a high-impact polycarbonate display window, and the Duraplus™ suspension system, to cushion internal components. The Genesis is one tough gas detector.

Benefits

- Backed by a two-year, no-questions-asked warranty on all monitor components
- Most versatile monitor available
- Minimum two-year sensor life (CO, H₂S, O₂, LEL)
- Duraplus™ technology for outstanding durability
- Bump Test and Calibration reminders alert the user when to perform maintenance

Features

- Simple one-button calibration
- Display with user-friendly icons
- Four configurations:
 - Diffusion style
 - Internal pump
 - Hand-aspirated pump
 - Extender cable
- Powered by three 'AA' (alkaline) batteries (22 hours) or rechargeable NiHy (16 hours) (for diffusion mode)
- Peak, STEL, and TWA readings displayed on request
- Bright LED array (for alarm conditions), 180° viewable
- RF resistant
- User selectable, password protection for calibration
- Rugged die cast aluminum housing with protective rubber guards
- Glow-in-the-dark buttons
- Water-resistant design
- Configurable for one, two, three, or four plug-in sensors

| Range of Gases Detected | | | | | |
|-------------------------|------------------|---------------------------------|------------------|-----------------|-----------------------------------|
| Gas | Formula | Standard Range | Gas | Formula | Standard Range |
| Ammonia | NH ₃ | 0-100 ppm in 1 ppm increments | Nitric oxide | NO | 0-100 ppm in 1 ppm increments |
| Carbon monoxide | CO | 0-250 ppm in 1 ppm increments | Nitrogen dioxide | NO ₂ | 0-9.9 ppm in 0.1 ppm increments |
| Chlorine | Cl ₂ | 0-9.9 ppm in 0.1 ppm increments | Oxygen | O ₂ | 0-30.0% Vol in 0.1% increments |
| Combustible | LEL | 0-100% LEL in 1% LEL increments | Phosphine | PH ₃ | 0-3.00 ppm in 0.01 ppm increments |
| Hydrogen cyanide | HCN | 0-30 ppm in 1 ppm increments | Sulfur dioxide | SO ₂ | 0-9.9 ppm in 0.1 ppm increments |
| Hydrogen sulfide | H ₂ S | 0-200 ppm in 1 ppm increments | | | |



With a high-impact polycarbonate display and the Duraplus™ internal shock absorber system, the Genesis is one tough gas detector

Options

- Internal datalogging feature allows programming of up to 16 user IDs and 64 location IDs with Windows compatible software package
- Datalogging retrieval kit
- Battery chargers (115V AC, 230V AC, 12V AC)
- 25 foot or 50 foot hose for sample-draw pump
- Extender cables, 20 feet or 50 feet
- Hand aspirated pump
- Internal sampling pump
- Vinyl carrying case



- Calibration kits. All gas monitoring instrumentation must be calibrated on a regular basis to ensure proper calibration and maximum safety. Kits include regulator, tubing, and calibration cup to fit over sensors and all other accessories needed to perform sensor calibration



- Battery Conditioning Station More than a simple battery charger, the microprocessor controlled Conditioning Station automatically adjusts its charge cycle to optimize battery performance and life. Conditions up to six battery packs at one time. Detects insertion of battery pack - even packs with no voltage. Upon insertion, conditioning station evaluates current battery status and performs appropriate conditioning. Signals when pack is fully charged.



- Small storage case



- Large storage case



Extender cables



Hand aspirated pump



Internal sampling pump

Thermo Scientific Genesis Specifications

| | |
|---------------------------------|--|
| Sensors | Catalytic compensated: combustible gases Electrochemical: Cl ₂ , CO, HCN, H ₂ S, O ₂ , NH ₃ , NO, NO ₂ , PH ₃ , SO ₂ |
| Sampling Method | Diffusion (standard) Sample-draw (optional built-in pump) Extender cable (optional 20 or 50 foot) |
| Response Time | 90% in 30 seconds |
| Accuracy | ±10% of reading (when calibrated and maintained according to instruction manual recommendations) |
| Repeatability | ±5% of reading (when calibrated and maintained according to instruction manual recommendations) |
| Operating Temperature | -4°F to 113°F (-20°C to 45°C) |
| Humidity Range | 0 to 95% RH, non-condensing |
| Alarms | Falling/rising (O ₂) Rising low/high (all toxics & combustible) Sensor circuit failure Low battery Low flow (pump version) Log full (data logging version) Audible buzzer (93 dB at 30 cm) Flashing LED array User adjustable alarms |
| LCD Display | LCD, back light on demand |
| Power Sources | Intrinsically safe battery packs (three AA alkaline or NiHy battery pack) |
| Battery Life (20°C/68°F) | Alkaline: 22 hours without pump; 11 hours with pump NiHy: 16 hours without pump; 8 hours with pump |
| Controls | On/off, air, back light |
| Dimensions | 2.25 in (57 mm) H x 3.7 in (94 mm) W x 6.0 in (152 mm) D |
| Weight | 16oz (454g) |
| Casing Materials | Powder coated, die cast aluminum with molded, protective end caps |
| Splash Resistance | Water-resistant, gasketed housing |
| Intrinsic Safety Rating | UL classified and CSA certified for Class I, Division 1, Groups A, B, C, & D LCIE certified intrinsically safe EEx ia IIC T4 |
| Sensor Warranty | Two year (CO, H ₂ S, O ₂ , LEL) One year (Cl ₂ , HCN, NH ₃ , NO, NO ₂ , PH ₃ , SO ₂) |
| Instrument Warranty | Two year (materials and workmanship) |

Thermo Scientific products represent a broad range of high-end analytical instruments, chemistry and consumable supplies, laboratory equipment, software and services that enable integrated laboratory workflow solutions. Thermo Scientific is the new name for a trusted brand – Thermo Electron – that the world's most renowned researchers, clinicians and scientists already count on to solve their analytical challenges. The brand is strengthened by the additions equipment, consumables and reagents acquired from Fisher Scientific.