

Thermo Scientific Orion 2111LL Sensing Tube Assembly, Cat. No. 2111ST

Sensing Tube Replacement

1. Remove the flow cell cap by pulling it up vertically and place it to the left of the flow cell, making sure that the electrodes and ATC probe do not touch any potentially contaminated surfaces.
2. Remove the old electrode sensing tube by pulling it up vertically.
3. Locate the cotton junction and slot on the new sensing tube, as shown in **Figure 1**.
4. Insert the new sensing tube into the flow cell base in the correct orientation, as shown in **Figure 2**.
5. Push down vertically on the sensing tube until the step is flush with the base of the flow cell.

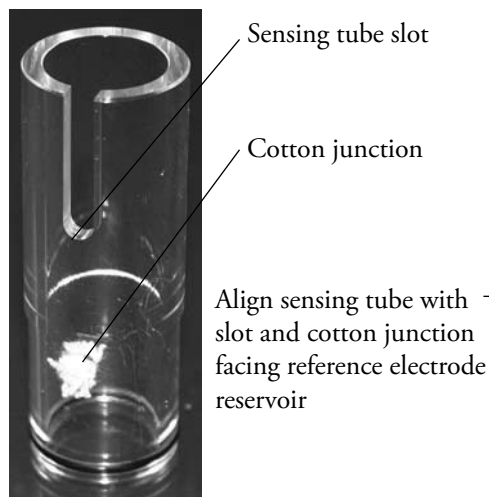


Figure 1 – Sensing Tube

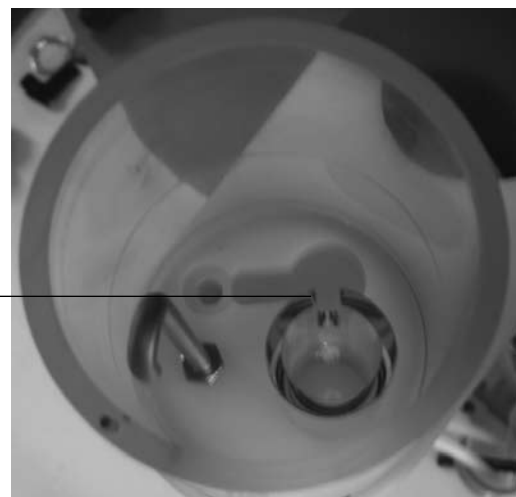


Figure 2 – Sensing Tube Orientation

©2008 Thermo Fisher Scientific Inc. All rights reserved. All trademarks are the property of Thermo Fisher Scientific Inc. and its subsidiaries.



Environmental Instruments
Water Analysis Instruments

North America
166 Cummings Center
Beverly, MA 01915 USA
Toll Free: 1-800-225-1480
Tel: 1-978-232-6000
Dom. Fax: 1-978-232-6015
Int'l Fax: 978-232-6031

Europe
Denmark House, Angel Drove
Ely, Cambridgeshire
England, CB7 4ET
Tel: 44-1353-666111
Fax: 44-1353-666001

Asia Pacific
Blk 55, Ayer Rajah Crescent
#04-16/24, Singapore 139949
Tel: 65-6778-6876
Fax: 65-6773-0836

www.thermo.com/water

Thermo
SCIENTIFIC